

SG COPY

This plan has been amended as follows

SG No. A/710/2019	Amendment	Date	Initialled
SHEET 1 OF 4			
Approved			
Surveys-General			
Date: 2020-08-17			

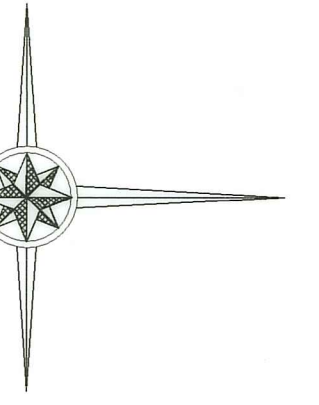
GENERAL PLAN K500  
 COMPRISING 4 SHEETS  
 AUASBLICK EXTENSION 1  
 COMPRISING 265 ERVEN  
 NUMBERED 808 TO 1092  
 INCLUDING 3 PUBLIC OPEN SPACES  
 NUMBERED 1089 TO 1091,  
 1092 (STREET) AND REMAINDER STREETS

BEING THE SUBDIVISION OF  
 PORTION 165 OF THE FARM KLEIN  
 WINDHOEK TOWN AND TOWNLANDS NO.70  
 VIDE DIAGRAM S.G. NO. A189/2009

SITuated IN THE MUNICIPAL AREA OF WINDHOEK  
 REGISTRATION DIVISION K KHOMAS REGION  
 REPUBLIC OF NAMIBIA

Surveyed in August 2019 by me  
 H.L. STRODMAN  
 Land surveyor

1:5000



DATA	MAIN FIGURE	CO-ORDINATES	BLOCK CORNERS	CO-ORDINATES	BLOCK CORNERS	CO-ORDINATES	BLOCK CORNERS	CO-ORDINATES	BLOCK CORNERS
SIDES	Meters	Direction	Constant +0.00	+0.00	Orientation				
A	64.24	B	-11 528.67	A	464	808	-1146.69	6327.32	876
B	127.57	C	-11 528.67	B	464	808	-1170.30	6327.32	876
C	148.02	D	-11 613.87	C	-11 613.87	6530.37	-1161.51	6327.32	876
D	107.04	E	-11 738.07	D	-11 738.07	6530.37	-1211.34	6530.37	876
E	67.11	F	-11 879.03	E	-11 879.03	6530.37	-1261.88	6530.37	876
F	20.39	G	-11 979.03	F	-11 979.03	6530.37	-1311.88	6530.37	876
G	17.92	H	-12 079.03	G	-12 079.03	6530.37	-1361.88	6530.37	876
H	16.77	I	-12 179.03	H	-12 179.03	6530.37	-1411.88	6530.37	876
I	16.00	J	-12 279.03	I	-12 279.03	6530.37	-1461.88	6530.37	876
J	15.23	K	-12 379.03	J	-12 379.03	6530.37	-1511.88	6530.37	876
K	14.46	L	-12 479.03	K	-12 479.03	6530.37	-1561.88	6530.37	876
L	13.69	M	-12 579.03	L	-12 579.03	6530.37	-1611.88	6530.37	876
M	12.92	N	-12 679.03	M	-12 679.03	6530.37	-1661.88	6530.37	876
N	12.15	O	-12 779.03	N	-12 779.03	6530.37	-1711.88	6530.37	876
O	11.38	P	-12 879.03	O	-12 879.03	6530.37	-1761.88	6530.37	876
P	10.61	Q	-12 979.03	P	-12 979.03	6530.37	-1811.88	6530.37	876
Q	9.84	R	-13 079.03	Q	-13 079.03	6530.37	-1861.88	6530.37	876
R	9.07	S	-13 179.03	R	-13 179.03	6530.37	-1911.88	6530.37	876
S	8.30	T	-13 279.03	S	-13 279.03	6530.37	-1961.88	6530.37	876
T	7.53	U	-13 379.03	T	-13 379.03	6530.37	-2011.88	6530.37	876
U	6.76	V	-13 479.03	U	-13 479.03	6530.37	-2061.88	6530.37	876
V	6.00	W	-13 579.03	V	-13 579.03	6530.37	-2111.88	6530.37	876
W	5.23	X	-13 679.03	W	-13 679.03	6530.37	-2161.88	6530.37	876
X	4.46	Y	-13 779.03	X	-13 779.03	6530.37	-2211.88	6530.37	876
Y	3.69	Z	-13 879.03	Y	-13 879.03	6530.37	-2261.88	6530.37	876
Z	2.92	A1	-13 979.03	Z	-13 979.03	6530.37	-2311.88	6530.37	876
A1	2.15	A2	-14 079.03	A1	-14 079.03	6530.37	-2361.88	6530.37	876
A2	1.38	A3	-14 179.03	A2	-14 179.03	6530.37	-2411.88	6530.37	876
A3	0.61	A4	-14 279.03	A3	-14 279.03	6530.37	-2461.88	6530.37	876
A4	-0.16	A5	-14 379.03	A4	-14 379.03	6530.37	-2511.88	6530.37	876
A5	-0.93	A6	-14 479.03	A5	-14 479.03	6530.37	-2561.88	6530.37	876
A6	-1.70	A7	-14 579.03	A6	-14 579.03	6530.37	-2611.88	6530.37	876
A7	-2.47	A8	-14 679.03	A7	-14 679.03	6530.37	-2661.88	6530.37	876
A8	-3.24	A9	-14 779.03	A8	-14 779.03	6530.37	-2711.88	6530.37	876
A9	-4.01	A10	-14 879.03	A9	-14 879.03	6530.37	-2761.88	6530.37	876
A10	-4.78	A11	-14 979.03	A10	-14 979.03	6530.37	-2811.88	6530.37	876
A11	-5.55	A12	-15 079.03	A11	-15 079.03	6530.37	-2861.88	6530.37	876
A12	-6.32	A13	-15 179.03	A12	-15 179.03	6530.37	-2911.88	6530.37	876
A13	-7.09	A14	-15 279.03	A13	-15 279.03	6530.37	-2961.88	6530.37	876
A14	-7.86	A15	-15 379.03	A14	-15 379.03	6530.37	-3011.88	6530.37	876
A15	-8.63	A16	-15 479.03	A15	-15 479.03	6530.37	-3061.88	6530.37	876
A16	-9.40	A17	-15 579.03	A16	-15 579.03	6530.37	-3111.88	6530.37	876
A17	-10.17	A18	-15 679.03	A17	-15 679.03	6530.37	-3161.88	6530.37	876
A18	-10.94	A19	-15 779.03	A18	-15 779.03	6530.37	-3211.88	6530.37	876
A19	-11.71	A20	-15 879.03	A19	-15 879.03	6530.37	-3261.88	6530.37	876
A20	-12.48	A21	-15 979.03	A20	-15 979.03	6530.37	-3311.88	6530.37	876
A21	-13.25	A22	-16 079.03	A21	-16 079.03	6530.37	-3361.88	6530.37	876
A22	-14.02	A23	-16 179.03	A22	-16 179.03	6530.37	-3411.88	6530.37	876
A23	-14.79	A24	-16 279.03	A23	-16 279.03	6530.37	-3461.88	6530.37	876
A24	-15.56	A25	-16 379.03	A24	-16 379.03	6530.37	-3511.88	6530.37	876
A25	-16.33	A26	-16 479.03	A25	-16 479.03	6530.37	-3561.88	6530.37	876
A26	-17.10	A27	-16 579.03	A26	-16 579.03	6530.37	-3611.88	6530.37	876
A27	-17.87	A28	-16 679.03	A27	-16 679.03	6530.37	-3661.88	6530.37	876
A28	-18.64	A29	-16 779.03	A28	-16 779.03	6530.37	-3711.88	6530.37	876
A29	-19.41	A30	-16 879.03	A29	-16 879.03	6530.37	-3761.88	6530.37	876
A30	-20.18	A31	-16 979.03	A30	-16 979.03	6530.37	-3811.88	6530.37	876
A31	-20.95	A32	-17 079.03	A31	-17 079.03	6530.37	-3861.88	6530.37	876
A32	-21.72	A33	-17 179.03	A32	-17 179.03	6530.37	-3911.88	6530.37	876
A33	-22.49	A34	-17 279.03	A33	-17 279.03	6530.37	-3961.88	6530.37	876
A34	-23.26	A35	-17 379.03	A34	-17 379.03	6530.37	-4011.88	6530.37	876
A35	-24.03	A36	-17 479.03	A35	-17 479.03	6530.37	-4061.88	6530.37	876
A36	-24.80	A37	-17 579.03	A36	-17 579.03	6530.37	-4111.88	6530.37	876
A37	-25.57	A38	-17 679.03	A37	-17 679.03	6530.37	-4161.88	6530.37	876
A38	-26.34	A39	-17 779.03	A38	-17 779.03	6530.37	-4211.88	6530.37	876
A39	-27.11	A40	-17 879.03	A39	-17 879.03	6530.37	-4261.88	6530.37	876
A40	-27.88	A41	-17 979.03	A40	-17 979.03	6530.37	-4311.88	6530.37	876
A41	-28.65	A42	-18 079.03	A41	-18 079.03	6530.37	-4361.88	6530.37	876
A42	-29.42	A43	-18 179.03	A42	-18 179.03	6530.37	-4411.88	6530.37	876
A43	-30.19	A44	-18 279.03	A43	-18 279.03	6530.37	-4461.88	6530.37	876
A44	-30.96	A45	-18 379.03	A44	-18 379.03	6530.37	-4511.88	6530.37	876
A45	-31.73	A46	-18 479.03	A45	-18 479.03	6530.37	-4561.88	6530.37	876
A46	-32.50	A47	-18 579.03	A46	-18 579.03	6530.37	-4611.88	6530.37	876
A47	-33.27	A48	-18 679.03	A47	-18 679.03	6530.37	-4661.88	6530.37	876
A48	-34.04	A49	-18 779.03	A48	-18 779.03	6530.37	-4711.88	6530.37	876
A49	-34.81	A50	-18 879.03	A49	-18 879.03	6530.37	-4761.88	6530.37	876
A50	-35.58	A51	-18 979.03	A50	-18 979.03	6530.37	-4811.88	6530.37	876
A51	-36.35	A52	-19 079.03	A51	-19 079.03	6530.37	-4861.88	6530.37	876
A52	-37.12	A53	-19 179.03	A52	-19 179.03	6530.37	-4911.88	6530.37	876
A53	-37.89	A54	-19 279.03	A53	-19 279.03	6530.37	-4961.88	6530.37	876
A54	-38.66	A55	-19 379.03	A54	-19 379.03	6530.37	-5011.88	6530.37	876
A55	-39.43	A56	-19 479.03	A55	-19 479.03	6530.37	-5061.88	6530.37	876
A56	-40.20	A57	-19 579.03	A56	-19 579.03	6530.37	-5111.88	6530.37	876
A57	-40.97	A58	-19 679.03	A57	-19 679.03	6530.37	-5161.88	6530.37	876
A58	-41.74	A59	-19 779.03	A58	-19 779.03	6530.37	-5211.88	6530.37	876
A59	-42.51	A60	-19 879.03	A59	-19 879.03	6530.37	-5261.88	6530.37	876
A60	-43.28	A61	-19 979.03	A60	-19 979.03	6530.37	-5311.88	6530.37	876
A61	-44.05	A62	-20 079.03	A61	-20 079.03	6530.37	-5361.88	6530.37	876
A62	-44.82	A63	-20 179.03	A62	-20 179.03	6530.37	-5411.88	6530.37	876
A63	-45.59	A64	-20 279.03	A63	-20 279.03	6530.37	-5461.88	6530.37	876
A64	-46.36	A65	-20 379.03	A64	-20 379.03	6530.37	-5511.88	6530.37	876
A65	-47.13	A66	-20 479.03	A65	-20 479.03	6530.37	-5561.88	6530.37	876
A66	-47.90	A67	-20 579.03	A66	-20 579.03	6530.37	-5611.88	6530.37	876
A67	-48.67	A68	-20 679.03	A67	-20 679.03	6530.37	-5661.88	6530.37	876
A68	-49.44	A69	-20 779.03	A68	-20 779.03	6530.37	-5711.88	6530.37	876
A69	-50.21	A70	-20 879.03	A69	-20 879.03	6530.37	-5761.88	6530.37	876
A70	-50.98	A71	-20 979.03	A70	-20 979.03	6530.37	-5811.88	6530.37	876
A71	-51.75	A72	-21 079.03	A71	-21 079.03	6530.37	-5861.88	6530.37	876
A72	-52.52	A73	-21 179.0						

# AUASBLICK EXTENSION 1

## GENERAL PLAN K500

SITUATE IN THE MUNICIPAL AREA OF WINDHOEK  
REGISTRATION DIVISION K KHOMAS REGION  
REPUBLIC OF NAMIBIA  
Surveyed in August 2019 by me  
H.L. Strydom  
Land Surveyor

S.R. No. E219/2019  
FILE No: Aua. A/1  
COMP: MG-5AC/WS.X5

See Sheet 3

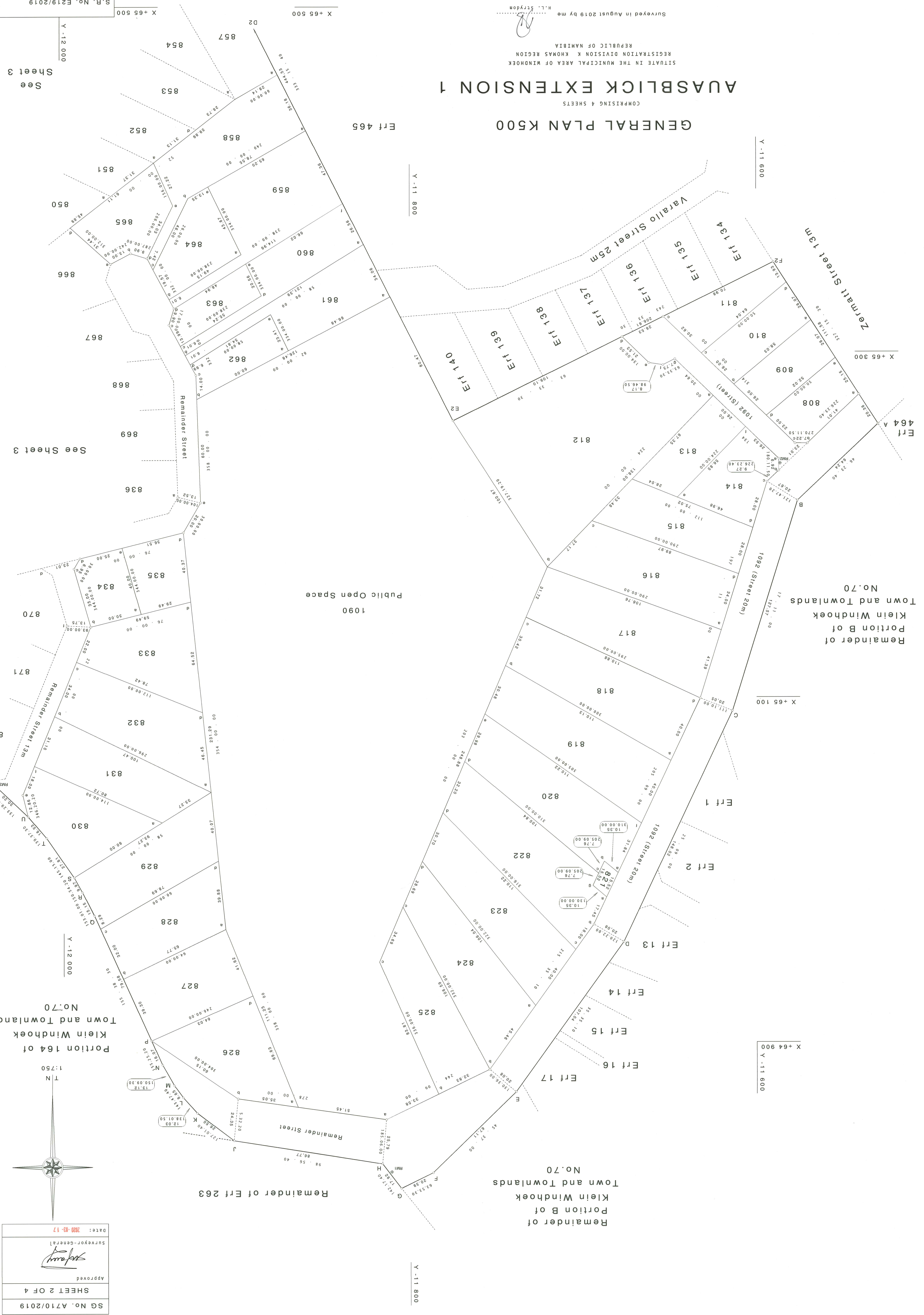
See Sheet 3

Portion 164 of  
Klein Windhoek  
Town and Townlands  
No.70

Portion B of  
Klein Windhoek  
Town and Townlands  
No.70

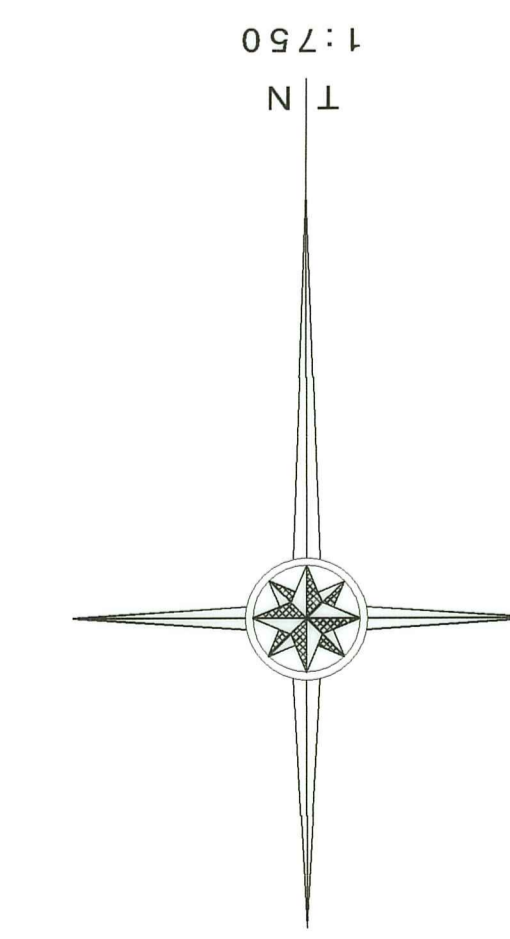
Remainder of  
Portion B of  
Klein Windhoek  
Town and Townlands  
No.70

Public Open Space  
1090




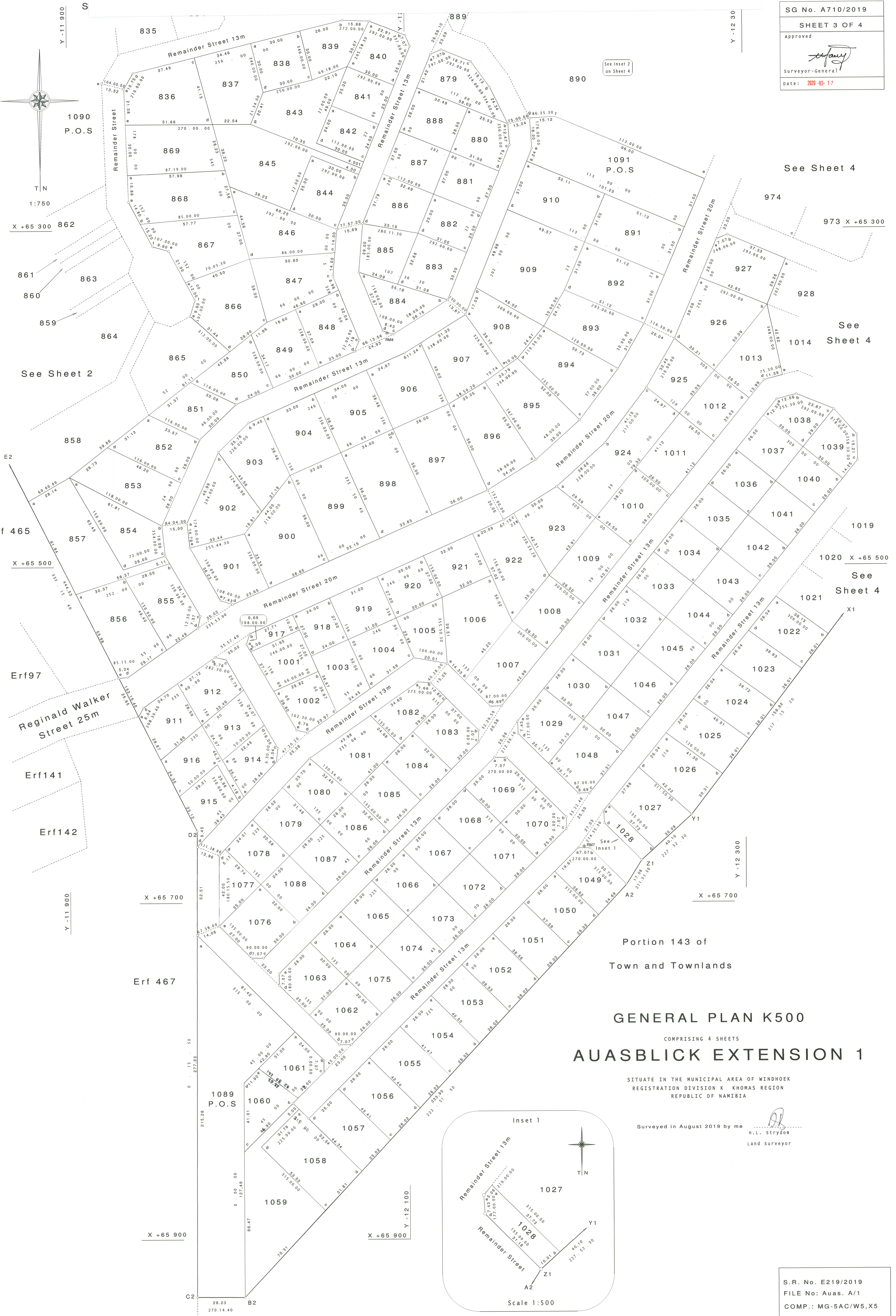
Date: 2020-03-17
Surveyor-General
<i>[Signature]</i>
Approved
SHEET 2 OF 4
SG No. A710/2019

SG COPY  
3rd COPY



K500/2

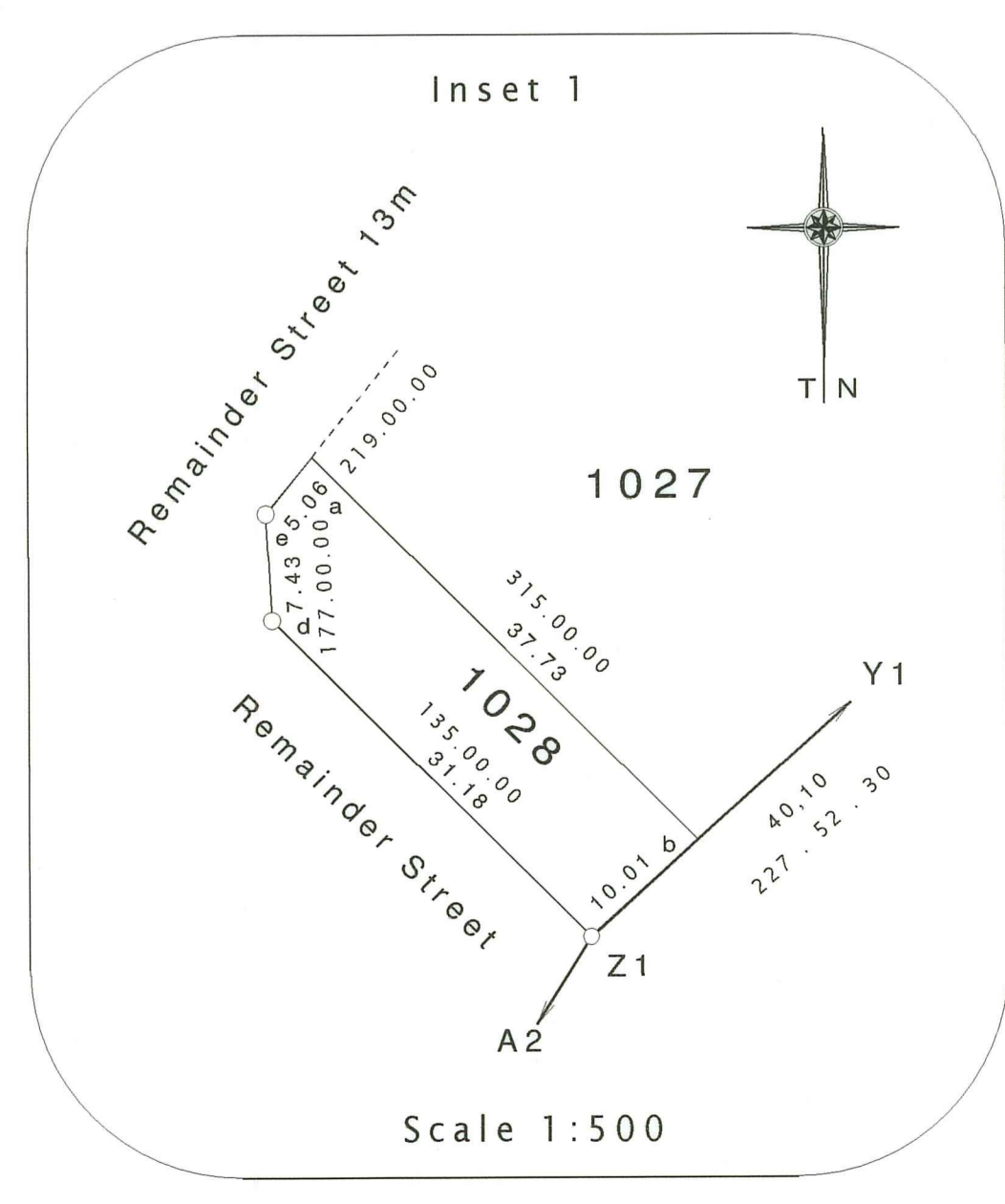
SG No. A710/2019
SHEET 3 OF 4
Approved

Surveyor-General
Date: 2020-02-17



Portion 143 of  
Town and Townlands  
**GENERAL PLAN K500**  
COMPRISING 4 SHEETS  
**AUASBLICK EXTENSION 1**

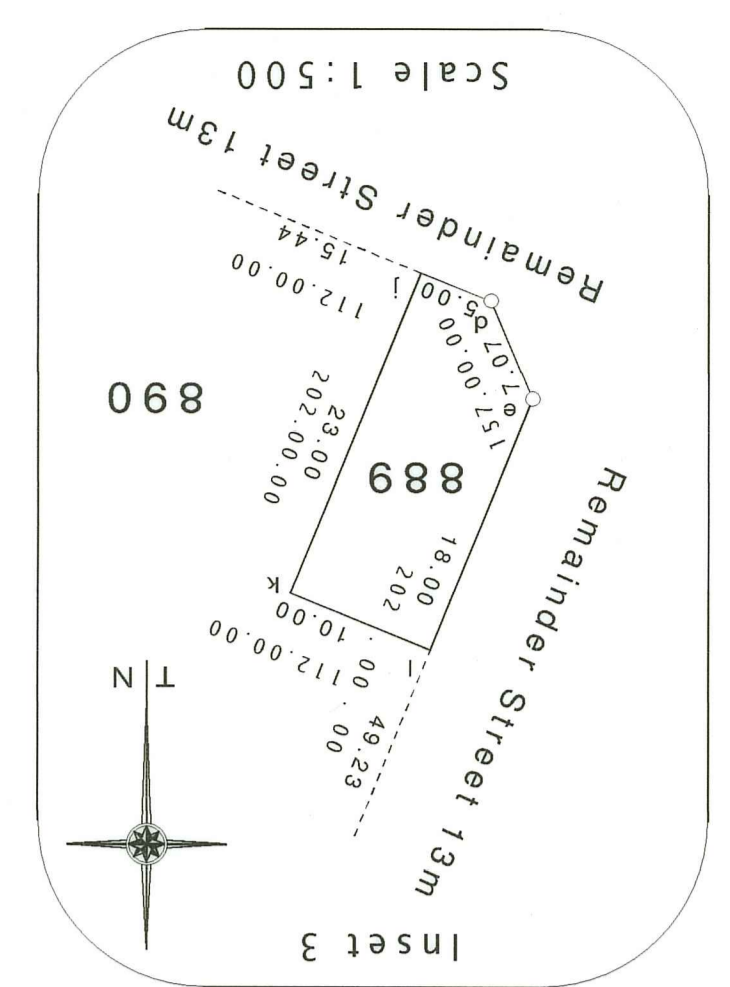
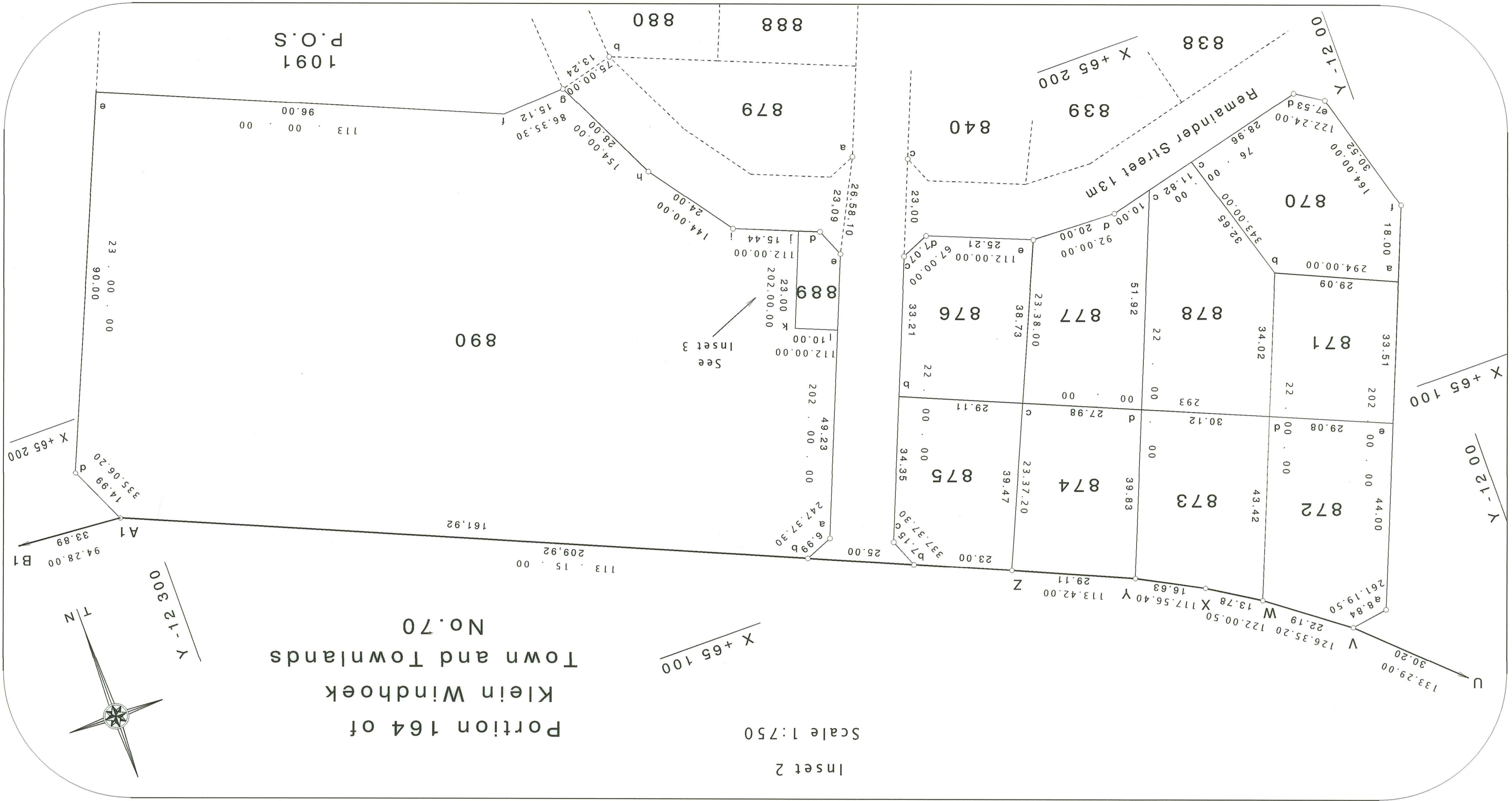
SITUATE IN THE MUNICIPAL AREA OF WINDHOEK  
REGISTRATION DIVISION K KHOMAS REGION  
REPUBLIC OF NAMIBIA

Surveyed in August 2019 by me   
H.L. Strydom  
Land Surveyor

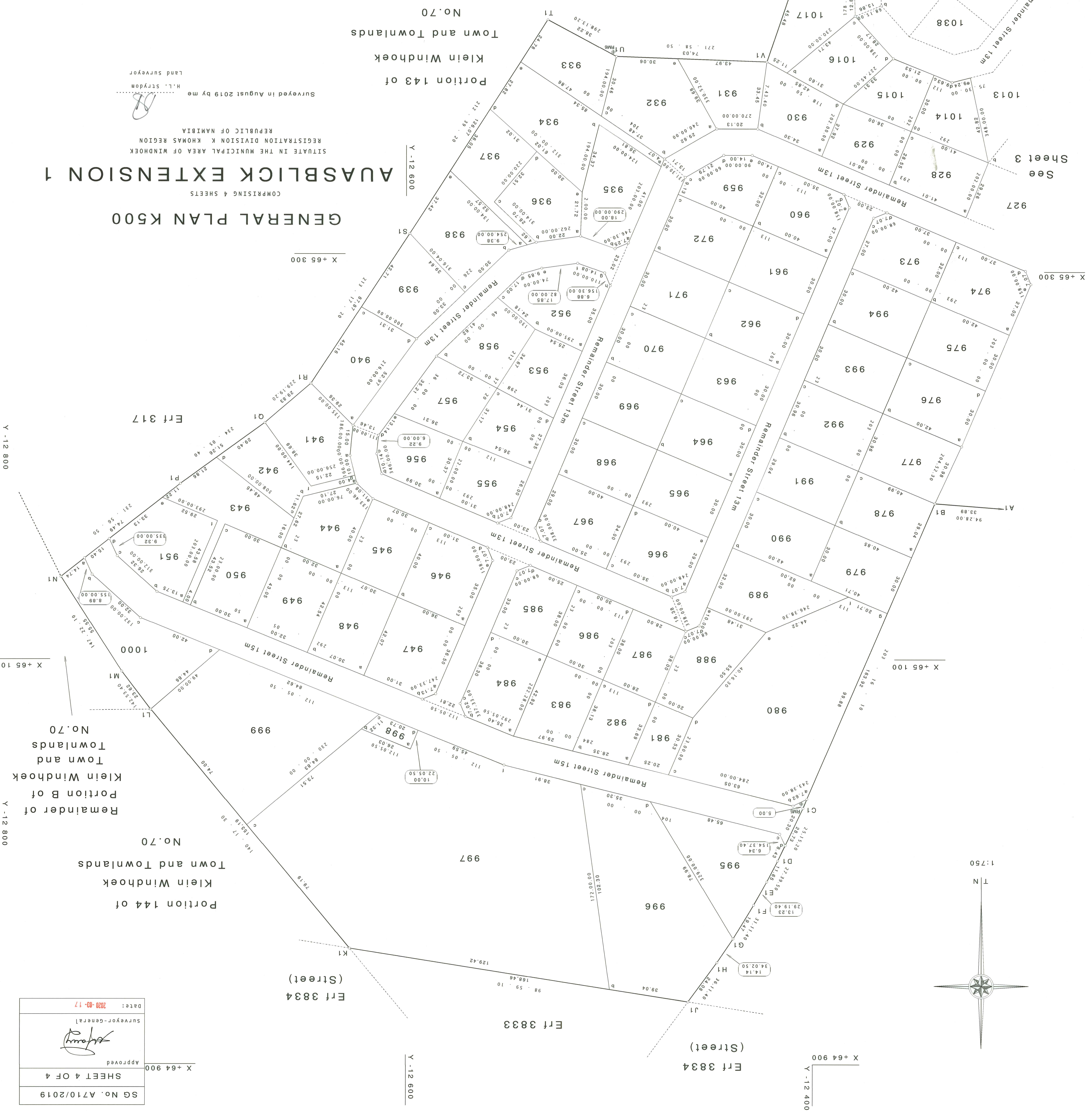


S.R. No. E219/2019
FILE No: Auas. A/1
COMP.: MG-5AC/W5,X5

S.R. No. E219/2019  
 FILE No: AuaS. A/1  
 COMP: MG-5AC/W5.X5



**GENERAL PLAN K500**  
 COMPRISING 4 SHEETS  
**AUASBLICK EXTENSION 1**  
 SITUATE IN THE MUNICIPAL AREA OF WINDHOEK  
 REGISTRATION DIVISION K KHOMAS REGION  
 REPUBLIC OF NAMIBIA  
 Surveyed in August 2019 by me  
 H. L. STEYDAM  
 Land Surveyor



SG No. A710/2019  
 SHEET 4 OF 4  
 Approved  
 Surveyor-General  
 Date: 2020-01-17

1:750

K500/4